

*Investment AB Kinnervik*



PRESENTATION OF FINANCIAL RESULTS Q4 2009

*Investment AB Kinnervik*

THE KINNEVIK GROUP

## KINNEVIK RETURN

- 30 years – average annual return 19%
- 5 years – average annual return 12%
- 2009 – annual return 73%
- Year-to-date 7% (per 16 February)



*Investment & P. Kinnevik*



## PORTFOLIO VIEW

### MAJOR LISTED HOLDINGS



- Agenda for growth and profitability
- Long-term view but with high return targets

### MAJOR UNLISTED HOLDINGS



- Maximise return through operational focus, control over cash-flow and efficient gearing

### NEW VENTURES



- Diversify Kinnevik's assets from maturing to high growth

## 2009 HIGHLIGHTS

- Korsnäs returned to double-digit EBIT margin
  - Focus on operational excellence and profitability
- Millicom – market leading growth and improving margins
- Tele2's growth in Russia continued
  - Over 4 million subscribers added during the year\*
- MTG – highest ever fourth quarter and full year sales in 2009 despite challenging economic climate
- Metro's best quarter ever in Q4 2009
  - Operating profit EUR 9.3 million
- Transcom returned to revenue growth in Q4
- Kinnevik acquired Emesco
  - Increased ownership in Major Listed Holdings (except Millicom)
- 5 new investments in New Ventures 2009
- Kinnevik's dividend increased by 50% to SEK 3.00

## MAJOR UNLISTED HOLDINGS

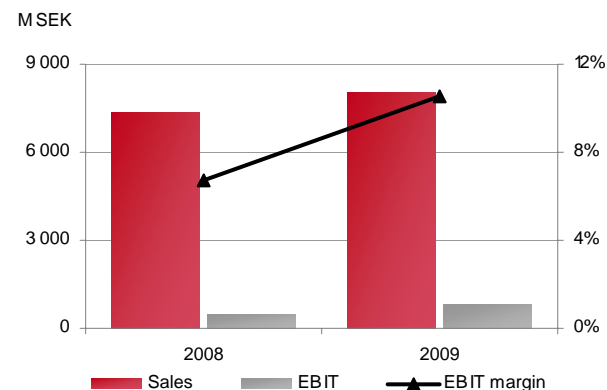
# KORSNÄS

- Second largest liquid board producer globally
- Premium quality producer of folding carton board

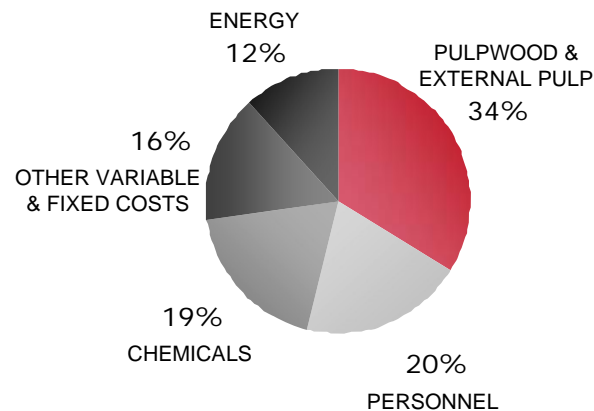
2009

- Sales of SEK 8,039 million
- EBIT SEK 851 million
- Return to double-digit EBIT margin
- Delivered volumes increased by 4.1% to 1,034,000 tonnes
- Investment in bioenergy plant will dramatically reduce Korsnäs' carbon footprint

KORSNÄS' KEY RATIOS 2009



KORSNÄS' COST STRUCTURE 2009



## MAJOR LISTED HOLDINGS

### MILLICOM

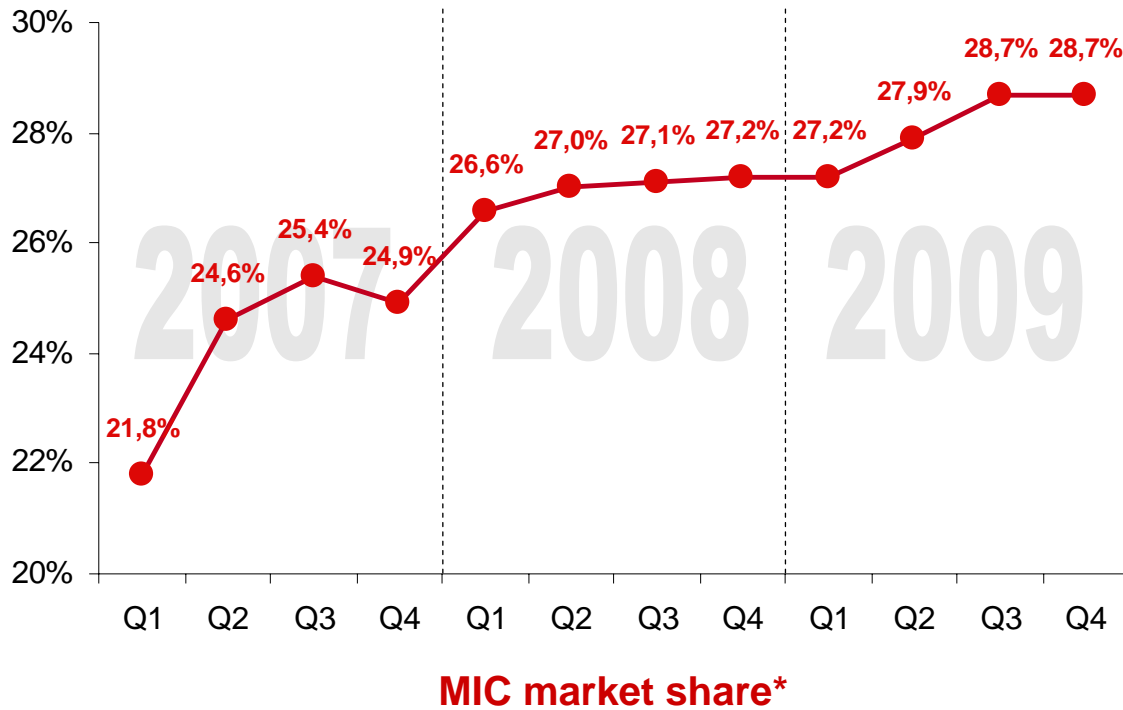
USD m	2009	2008	y-o-y %
Total revenues	3,373	3,151	7%
EBITDA	1,545	1,366	13%
EBITDA margins	46%	43%	
Subscribers, end of period (m)	33.9	27.7	22%

- Market leading growth and improving margins
- Operations in Rwanda launched in Q4 - Millicom's seventh African market
- EBITDA for the African operations increased by 39% year-on-year in Q4
- Continued focus on value-added services – 21% of recurring revenue
- Asian operations divested in 2009
- Well positioned to pursue short-term external growth opportunities
- Proposed dividend of \$1.40 per share for 2009



MAJOR LISTED HOLDINGS

# MILLICOM – MARKET SHARE EVOLUTION



- Strong market share growth during 2009

\* the market share for DRC is calculated on Kinshasa/BAS Congo regions only, which is the only regions where Millicom operates

## MAJOR LISTED HOLDINGS

### TELE 2

SEK m	2009	2008	y-o-y %
Operating revenue	39,265	38,272	3%
EBITDA	9,185	8,169	12%
EBITDA margins	23%	21%	
Mobile subscribers, end of period (m)	22,4	18,9	19%

- Revenue growth in Sweden - focus on postpaid customers paying off
- Successful roll-out of new regions in Russia – 10 new regions added in Q4 2009
- Continued solid operational contribution from Western Europe
- Intention to acquire the third largest operator in Kazakhstan, NEO, announced in December
- Divestment of Tele2 France completed



## MAJOR LISTED HOLDINGS

### MODERN TIMES GROUP MTG

SEK m	2009	2008	y-o-y %
Total revenues	14,173	13,166	8%
EBIT before non-recurring items	1,924	2,598	-26%
EBIT margins (%)	14%	20%	

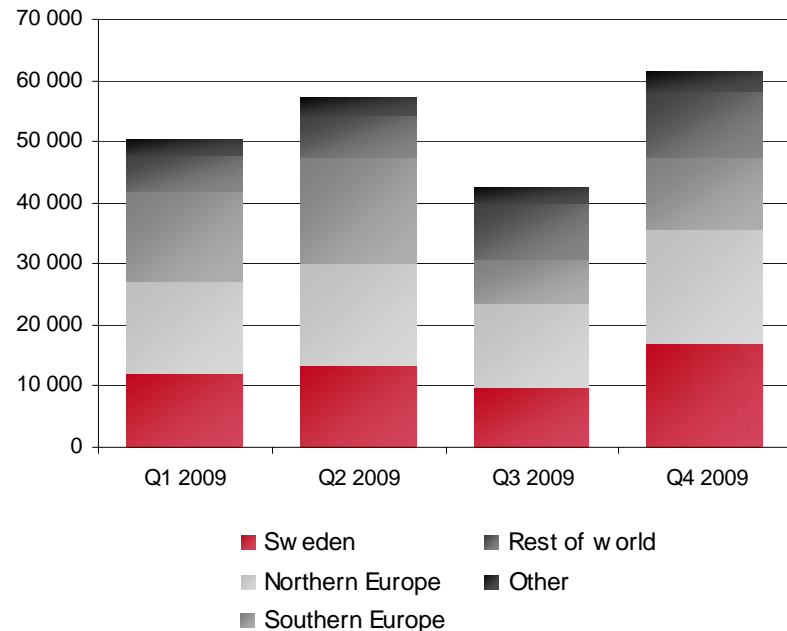
- Highest ever Q4 and full year sales in 2009, despite economic recession and declining advertising markets
- Strong competitive position moving forward
- Write-down of SEK 3,361 million primarily related to the Bulgarian broadcasting assets in Q4
- Proposed an increased annual dividend payment of SEK 5.50 per share



## METRO

- Q4 result the best in the history of Metro
- Operating profit of EUR 9.3 million in Q4
- Successful implementation of current strategy
  - Consolidation in mature markets
  - Expansion into emerging markets
  - Product development
  - Strong focus on profitability
- Metro is well positioned to benefit from a recovery of the global advertising market
  - Flexible low cost model
  - No heavy loss-making operations remaining

SALES PER REGION Q1-Q4 2009

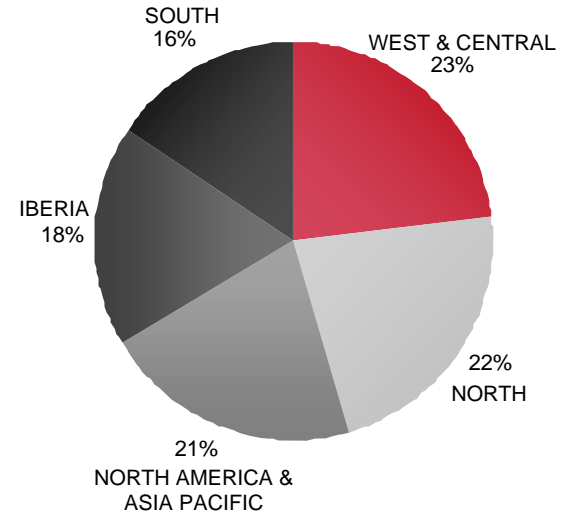


## MAJOR LISTED HOLDINGS

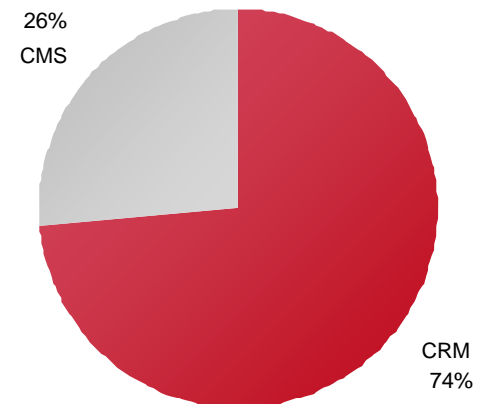
# TRANSCOM

- Net sales EUR 560.2 million
- Sequential revenue growth of 8.2%
- Sequential growth in CRM in all regions
- Gross margin improvement of 1.5ppt due to focus on cost-cutting measures
- Ongoing work regarding the South region recovery plan
- Implementation of Transcom's Group-wide SG&A reduction program continues

REGIONAL BREAKDOWN OF SALES FY 2009



CRM AND CMS – SHARE OF EBITA FY 2009



## NEW VENTURES

### NEW VENTURES – CURRENT PORTFOLIO

- Currently 12 investments in high growth segments – five new investments made during 2009
- Total value of Kinnevik's share SEK 1.4 billion at the end of 2009
- One new investments in the fourth quarter – European Internet Holding
- Investments primarily focused around the four areas; Food/fuel, Online, Microfinance and Africa



KontaktEast

RELEVANT  
TRAFFIC

European  
Internet  
Holding

R2 INTERNATIONAL

RawAgro

mycitydeal.de

ARM

MV MICROVEST  
INVESTING IN ONE WORLD

FINANCIALS

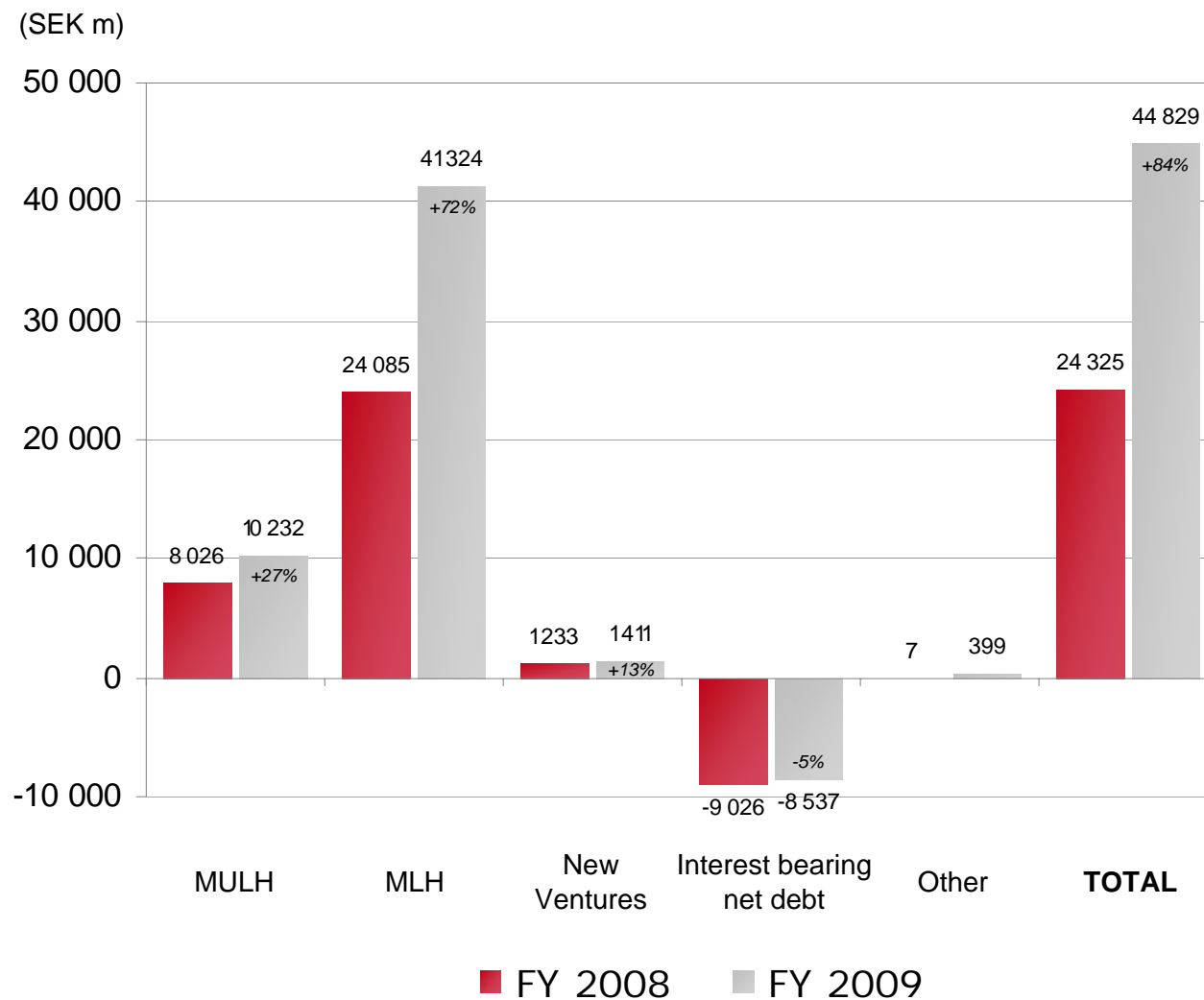
## PROFIT AND LOSS

<b>SEK m</b>	<b>2009</b>	<b>2008</b>	<b>y-o-y %</b>
Total revenues	8,397	7,719	9%
Operating profit	842	389	116%
Dividends received and changes in fair value	15,853	-25,726	
Net interest expense	-179	-544	
Profit before tax	16,516	-25,872	
Tax	-143	110	
Net income	16,373	-25,762	



FINANCIALS

# KINNEVIK'S NET ASSET VALUE



FINANCIALS

# NET ASSET VALUE 31 DECEMBER 2009

	Market value (SEKm)
Korsnäs	9,740
5% equity interest in Bergvik	492
Long-term debt relating to Korsnäs	-6,419
<b>Equity value Major Unlisted Holdings</b>	<b>3,813</b>

	Number of shares (000)	SEK/B- share	Voting/Economic interest, %		Market value (MSEK)
Millicom	37,835	533.00	34.9	34.9	20,166
Tele2	135,496	110.20	48.0	30.8	14,932
MTG	13,504	355.80	48.0	20.5	4,805
Metro shares	245,921	0.99	46.6	42.4	243
Metro warrants					345
Metro debentures					196
Transcom	16,339	39.00	44.6	22.3	637
<b>Total Major Listed Holdings</b>					<b>41,624</b>

<b>New Ventures</b>	<b>1,411</b>
---------------------	--------------

Long-term debt excl. debt relating to Korsnäs	-2,118
Other assets and liabilities	399
Net asset value	44,829
Total number of shares	277,158,190
<b>Net asset value per share</b>	<b>161.75</b>
Share price, Kinnevik B 31/12	107.00

\* Market Consensus analysts covering the Kinnevik share



FINANCIALS

# NET ASSET VALUE 16 FEBRUARY 2010

	Market value (SEKm)
Korsnäs	9,740
5% equity interest in Bergvik	492
Long-term debt relating to Korsnäs	-6,419
<b>Equity value Major Unlisted Holdings</b>	<b>3,813</b>

	Number of shares (000)	SEK/B- share	Voting/Economic interest, %		Market value (MSEK)
Millicom	37,835	577.00	34.9	34.9	21,831
Tele2	135,496	107.20	48.0	30.8	14,525
MTG	13,504	375.90	48.0	20.5	5,076
Metro shares	245,921	1.24	46.6	42.4	305
Metro warrants					531
Metro debentures					196
Transcom	16,339	37.60	44.6	22.3	614
<b>Total Major Listed Holdings</b>					<b>43,078</b>

<b>New Ventures</b>	<b>1,434</b>
---------------------	--------------

Long-term debt excl. debt relating to Korsnäs	-1,780
Other assets and liabilities	61
Net asset value	46,606
Total number of shares	277,158,190
<b>Net asset value per share</b>	<b>168.16</b>
Share price, Kinnevik B 16/2	115.00

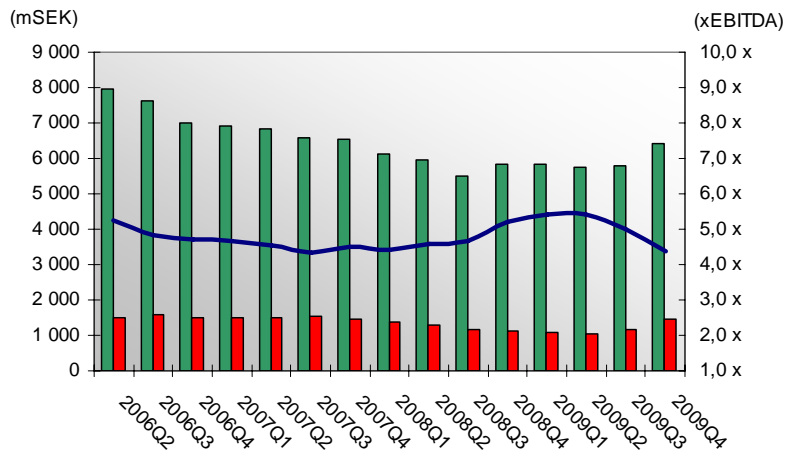
\* Market Consensus analysts covering the Kinnevik share

FINANCIALS

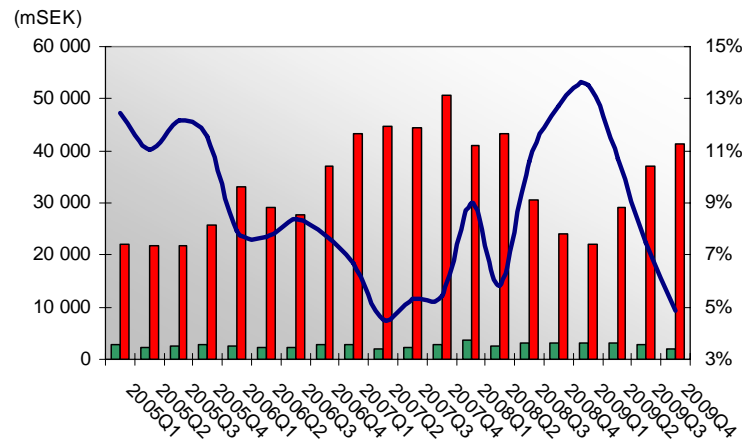
# KINNEVIK'S BALANCE SHEET 31 DECEMBER 2009

- Stable financial position
- Kinnevik's net debt amounts to SEK 8.2 billion
  - SEK 6.4 billion against Korsnäs - high leverage to maximise returns
  - SEK 2.0 billion against Major Listed Holdings of SEK 41 billion excluding Korsnäs

MAJOR UNLISTED HOLDINGS  
– NET DEBT TO EBITDA



MAJOR LISTED HOLDINGS  
– NET DEBT TO ASSET VALUE



## FINANCIALS

# PROPOSED DIVIDEND TO KINNEVIK

Dividends from portfolio companies <sup>1)</sup>	Ordinary dividend	Special dividend	Total
Tele2	522	271	793
MTG	74		74
Millicom <sup>2)</sup>	<u>389</u>		<u>389</u>
<b>TOTAL</b>	<b>985</b>	<b>271</b>	<b>1,256</b>
Dividend paid by Kinnevik	-831		-831
<b>NET</b>	<b>154</b>	<b>271</b>	<b>425</b>

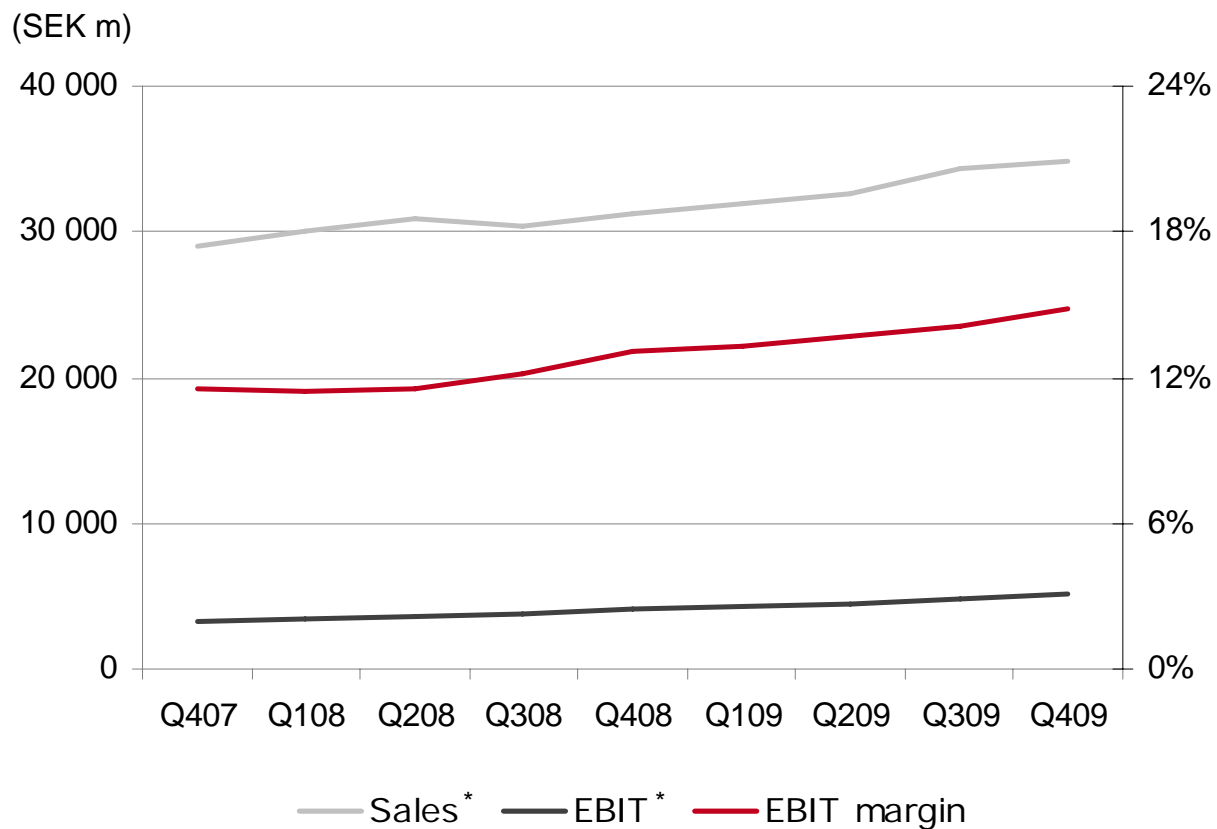
- Funds will be used to reduce net debt and increase flexibility for new investments
- Active capital management

1) Board suggestions subject to AGM decisions

2) Exchange rate per 10 Feb 2010: 7.3380 SEK/USD. Proposed dividend of \$1.40 per share

## FINANCIALS

# KINNEVIK'S SEE-THROUGH P&L DEVELOPMENT



- Robust sales and profits development in spite of global crisis

*Investment AB Kinnervik*



THANK YOU FOR LISTENING!

*Investment AB Kinnervik*

